

DIGITAL MFD SYSTEM

AFFORDABLE, FLEXIBLE, MULTI FUNCTION DISPLAY SYSTEM



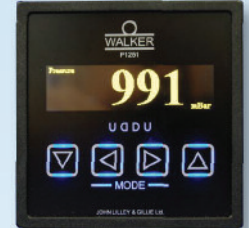
UDDU Heading



UDDU Wind Speed



UDDU Steering



UDDU Pressure

The P1251 Universal Digital Display Unit (UDDU) is housed in a DIN 43700 pattern (Din 96x96) case and reads a variety of IEC 61162-1:2000, NMEA 0183 messages in order to display the following information:

- Log Speed
- SOG (Speed over Ground)
- Log Distance Total
- Log Trip Distance & Total Distance
- Relative Wind Speed
- True Wind Speed
- Relative Wind Direction
- True to Ship (TTS) Wind Direction
- True Wind Direction
- Atmospheric Pressure and Pressure Trend
- Relative Humidity
- Air Temperature
- Water Temperature
- Heading True
- Heading Magnetic
- Heading True (Analogue Display)
- Heading Magnetic (Analogue Display)
- COG (Course Over Ground TRUE)
- Dew Point

The indicator has one 256 x 64 pixel OLED graphic display, 4 x touch switches for display mode and illumination control, 2 x NMEA 0183 inputs and 2 x NMEA 0183 outputs.

The P1251 UDDU will accept and re-transmit valid IEC 61162-1:2000 (NMEA 0183) messages with the following formatters; VHW, VBW, VTG, VLW, MWV, MWD, XDR, MTW, HDG, HDT, HDM, JLG (proprietary) and GGA. LEDs, visible at the rear face of the unit, provide additional information for customer confidence and diagnostic purposes.



Sensor options



P296

P292

P1003

P1002

F4723

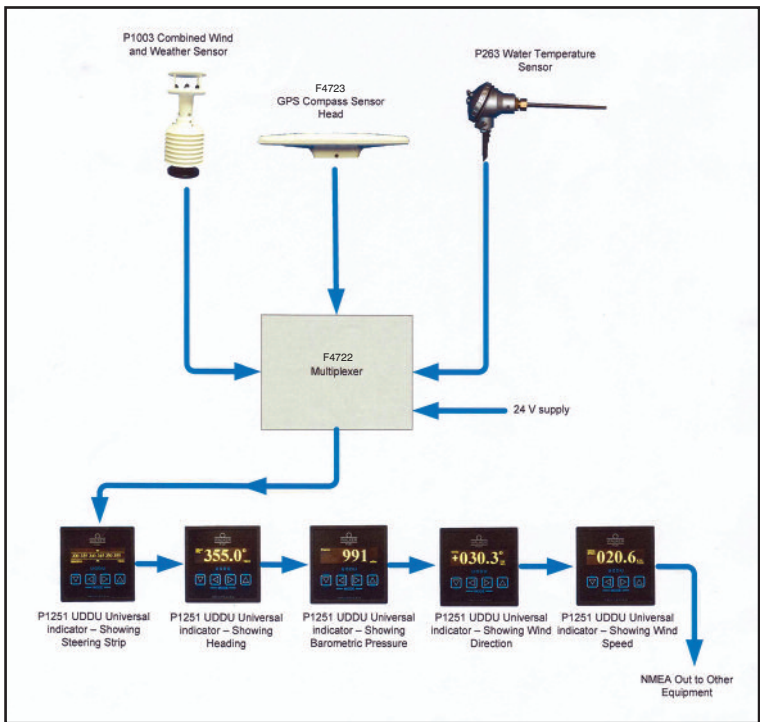
P1263

Interface options

F4722
Multiplexer
Unit

P1810
Changeover
Switch

P1066
True Wind
Interface



In accordance with our policy of continuous development, changes may be made from time to time without prior notice.



A Harrison Maritime Industries Ltd Company

Tel: +44(0)191 270 4260
 Fax: +44(0)191 257 6175
 E-Mail: sales@jlgmarine.com
 Web: www.jlgmarine.com

