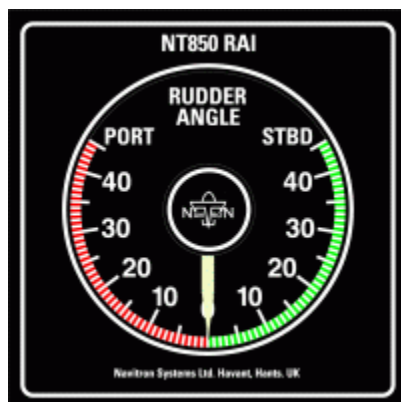
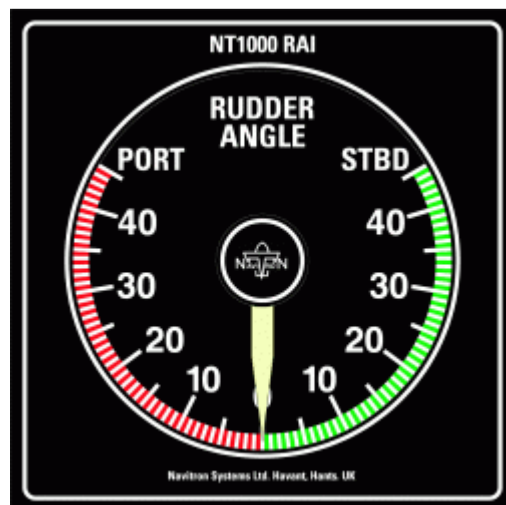




**Model NT920 RAI**  
**90mm Diameter Dial**  
**Non Type Approved**



**Model NT850 RAI**  
**66mm Diameter Dial**  
**Type Approved**



**Model NT1000**  
**90mm Diameter Dial**  
**Type Approved**

The NT850 and NT1000 RAIs are Class (GL) Type Approved for Steering System use and are also "Wheelmarked" (MED Module B) as compliant with ISO 20673 (2007).

Suitable for nominal 24Vdc supply (11-40Vdc) the indicators will accept potentiometric and serial data (\$xxRSA) inputs of rudder angle signalled by Navitron Systems Ltd. or suitable proprietary Rudder Reference Units.

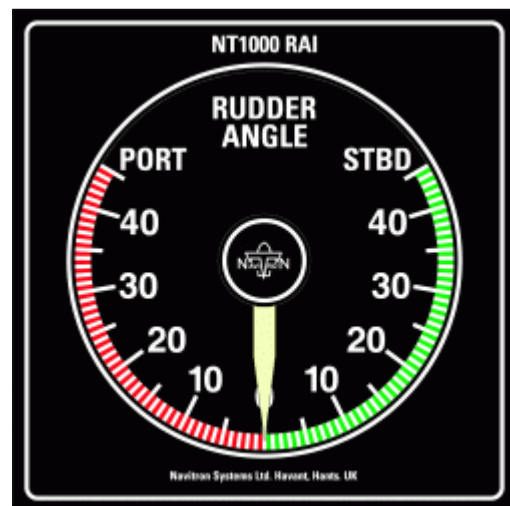
Each Indicator Head is processor intelligent and can be individually calibrated for amidships, full scale and linearity.

Variable scale illumination via an external control voltage or locally mounted potentiometer is also featured for night viewing.

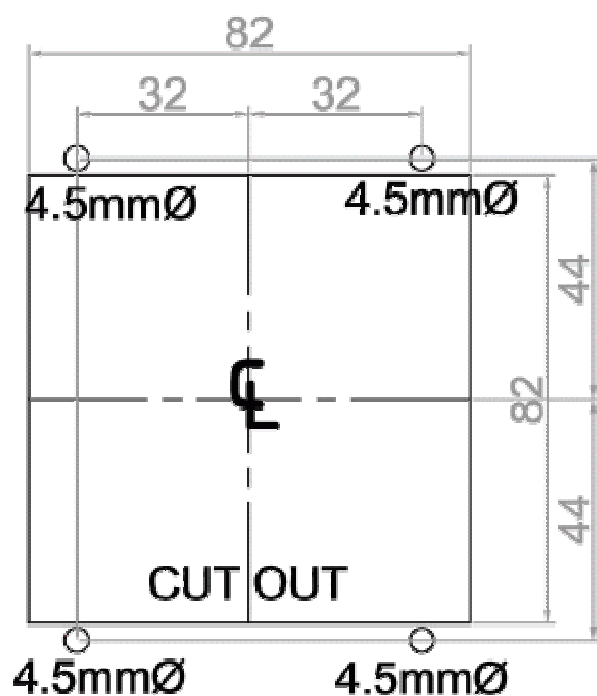
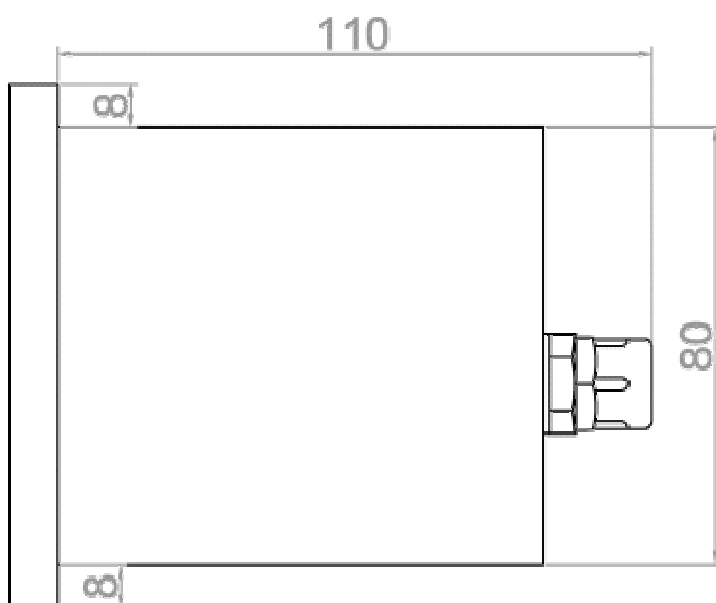
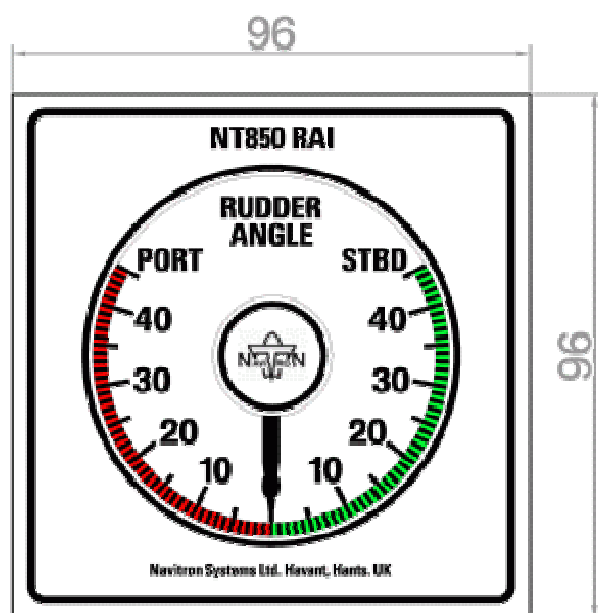
Dual Rudder Reference Units of the NT920 or NT1000 type are required to provide the signal to the RAI to render it electrically independent from the NT850 Steering System.

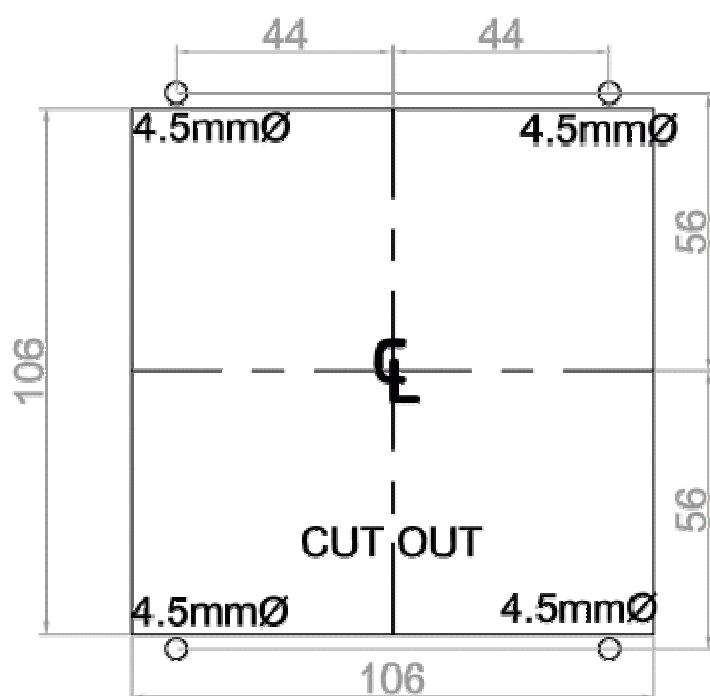
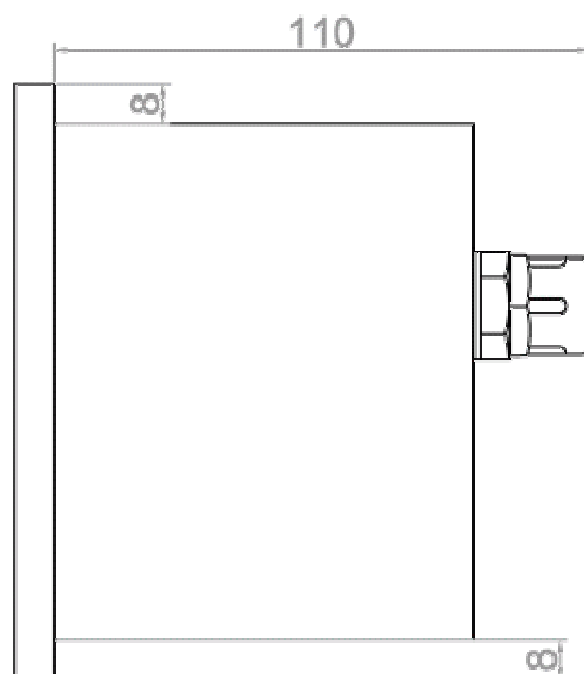
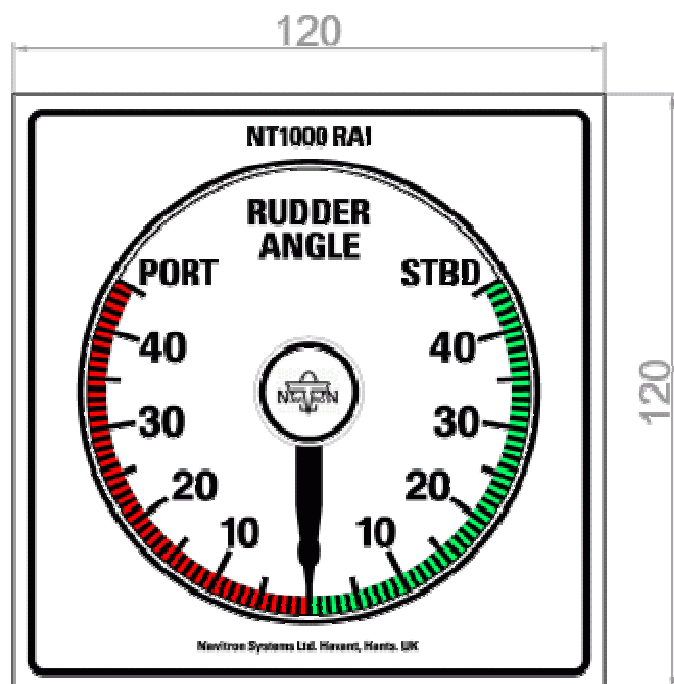


Model NT850 RAI



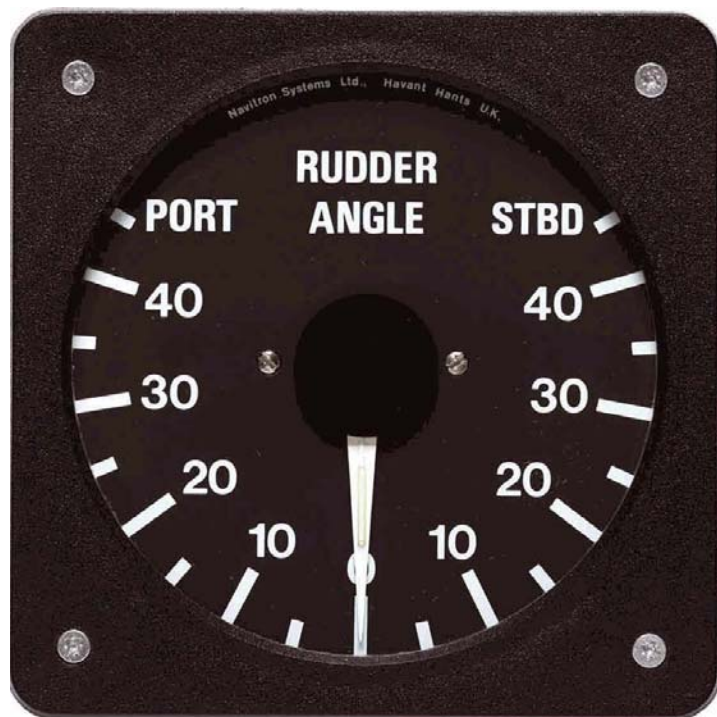
Model NT1000 RAI





# NAVITRON SYSTEMS LTD

## *Rudder Angle Indicators*



**Model NT920RAI Rudder Angle Indicator Head**  
Dims 110mm x 175mm x 75mm (depth)

Where Indicators are to be bracket mounted or externally located, a rugged pod assembly is available as an option which must be exercised to provide the necessary mounting assembly and weather proofing facilities



**Model NT920RTU Rudder Transmitter Unit**  
Dims 100mm x 165mm x 145mm (height)

Commensurate with the installation flexibility of the Navitron equipment range, NT920 Rudder Angle Indicators may be configured for 'add on' use with all Navitron Autopilot models or as components of an entirely independent Rudder Indicator system.

Whether operating directly from an Autopilot or as an independent system, single or multi head installation is permissible with the attendant advantage that all Indicator heads are electrically identical rendering them completely interchangeable.

The standard Indicator head (type NT920RAI) is suitable for internal panel mounted location and comprises a robust moving coil driving a white pointer against a black scale background clearly marked in 5° increments. Standard range markings are 45-0-45° or 90-0-90° over a total scale arc of 240°.

Simple 'on board' calibration and inbuilt facilities for fixed or variable intensity red scale illumination are also standard features.



**Model NT920RAI (PM) Pod Mount Assembly**  
Dims 125mm x 125mm x 85mm (depth)

Independent Rudder Angle Indicator systems are immediately compatible with a supply voltage of 11-40Vdc and are installed in conjunction with a Rudder Transmitter Unit type NT920RTU or the purpose dedicated potentiometer contained within a Navitron Autopilot Dual Rudder Reference Unit. In either case, the reference unit is of rugged cast aluminium construction commensurate with mounting adjacent to the rudder stock.



**NAVITRON SYSTEMS LTD** (Registered in England 2607869)  
Osborn House, 25E Brockhampton Lane, Havant, Hampshire PO9 1JT  
TEL: (UK) 023 9249 8740 FAX: (UK) 023 9249 8783  
(INT) +44 23 9249 8740 (INT) +44 23 9249 8783  
E-mail: sales@navitron.co.uk Web: www.navitron.co.uk