



G•SERIES



G•COMBO GPS Chartplotter / Digital Fishfinder

G•PLOT GPS Chartplotter

G•FISH Digital Fishfinder

G•PLOT


CHARTPLOTTER G142C

The GME G-Plot offers a simple to use highly featured GPS chartplotter. Incorporating a 16 channel internal GPS antenna for fast GPS updates, perspective view, animated navigation markers and plotter mode are some of the many functions of this unit.

Multiple screen options are available and 6 can be 'saved to favourites' for easy access.

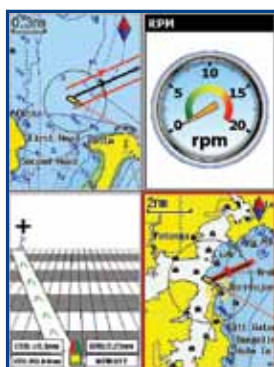
Background world map included. The unit also has a slot for a C-Map Max™ SD card.



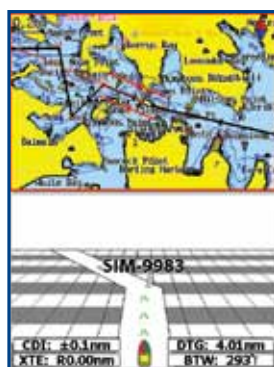
- > 142 mm (5.6") diagonal screen, high resolution with 640 (H) x 480 (V) pixels.
- > Internal 16 Channel GPS.
- > 10 level adjustable backlighting with night mode.
- > Simulation mode.
- > NMEA 2000 compatible.
- > NMEA 0183 interface with 2 outputs and 2 inputs.
- > C-Map Max™ compatible. 



Split screen chart



Four way split screen



Highway mode with chart



Full screen chart

G•COMBO

COMBINED CHARTPLOTTER + FISHFINDER G142CFD

The GME G-Combo combines all the features of the G-Plot chartplotter with the powerful dual frequency digital sonar of the G-Fish. Offering outstanding performance and incredible value.

The easy to use intuitive menu means navigating around this unit is simple. It incorporates a 16 channel internal GPS antenna and digital sounder technology. This unit is perfect for the boater who wants to get there and fish.

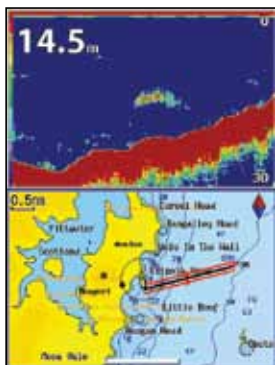
The unit comes complete with a 600 watt dual frequency (50/200 kHz) transom mount triducer, which incorporates depth, temperature and a water speed paddle wheel.



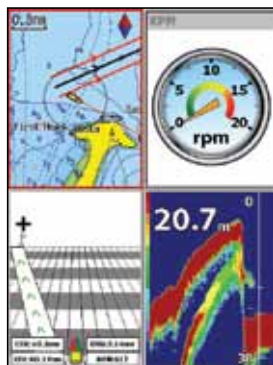
- > 142 mm (5.6") diagonal screen, high resolution with 640 (H) x 480 (V) pixels.
- > Internal 16 Channel GPS.
- > 10 level adjustable backlighting with night mode.
- > Digital sounder technology.
- > 600 W Dual frequency 50/200 kHz triducer included.
- > Simulation mode.
- > NMEA 2000 compatible.
- > NMEA 0183 interface with 2 outputs and 2 inputs.
- > C-Map Max™ compatible.



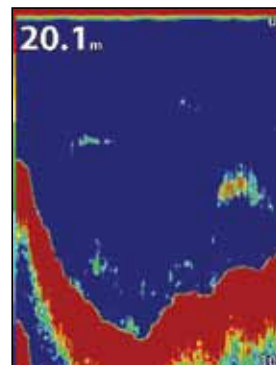
Perspective chart view



Fishfinder plus chart



Four way split screen



Full screen fishfinder



FISHFINDER GI42FD

The GME G-Fish is a state-of-the-art, high performance digital fishfinder, perfect for discerning fishermen wanting to find fish.

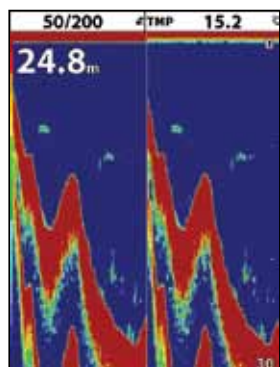
The unit has automatic mode ensuring the digital technology will perform best for all conditions, with a manual override.

Bottom lock, A-scope, split frequency and zoom are some of the screen configurations available.

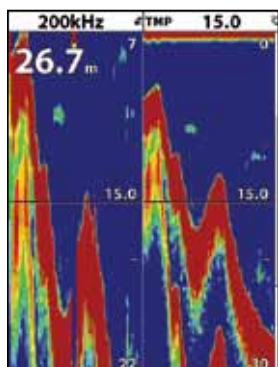
The unit comes complete with a 600 watt dual frequency (50/200 kHz) transom mount triducer, which incorporates depth, temperature and a water speed paddle wheel.



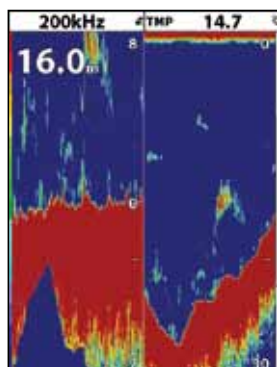
- > 142 mm (5.6") diagonal screen, high resolution with 640 (H) x 480 (W) pixels.
- > 10 level adjustable backlighting with night mode.
- > Digital sounder technology.
- > 600 W Dual frequency 50/200 kHz triducer included.
- > Simulation mode.
- > NMEA 2000 compatible.
- > NMEA 0183 interface with 2 outputs and 2 inputs.



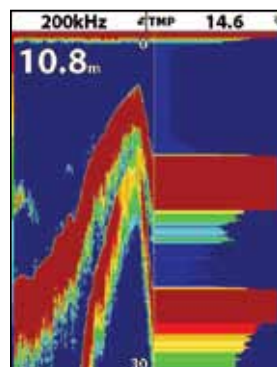
Split screen 50/200 kHz shown.



Split screen with zoom function on.



Split screen with bottom lock.



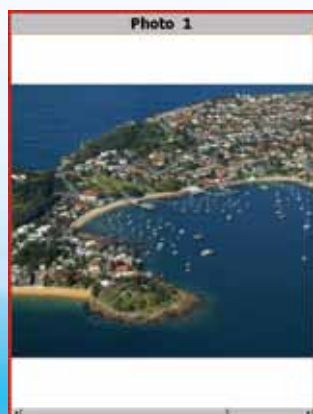
Split screen with A-scope

OPTIONAL CHARTS C-MAP MAX™

C142CFD + C142C are C-Map compatible using C-Map Max™ on SD card.



Dynamic navigation aids displayed.



Aerial photographs available



Official data source information



Quick information when icons are highlighted.



Adjustable tilt and swivel bracket supplied.



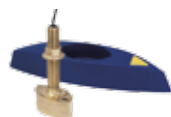
Capture your favourite fishfinder or chart image onto the embedded memory or on a removable SD card for viewing and printing on your PC.

ACCESSORIES



TD001

Puck style in-hull transducer with easy adjustment to hull deadrise angles of up to 22 degrees. 600 watt Dual frequency (50/200 kHz) depth only.



TD002

Bronze Thru-Hull 600 watt Dual frequency (50/200 kHz) transducer. Depth and temperature.



MBO29

Mounting Bracket



GPS450

External GPS antenna with 9 m of cable.



ABDECK

GPS450 deck mount



CVR031

Cabin cover



TD003

Transducer included with G142CFD and G142FD. Dual-frequency (50/200 kHz) Speed, depth and temperature.



LE031

Power lead for G142CFD and G142FD



LE032

Power lead for G142C

SPECIFICATIONS	G 142C	G 142CFD	G 142FD
	GPS CHARTPLOTTER	GPS CHARTPLOTTER/ FISHFINDER	DIGITAL FISHFINDER
LCD Display type	LCD - TFT - LED backlighting	LCD - TFT - LED backlighting	LCD - TFT - LED backlighting
LCD Display size	142 mm diagonal, 113 mm (H) x 85 mm (W)	142 mm diagonal, 113 mm (H) x 85 mm (W)	142 mm diagonal, 113 mm (H) x 85 mm (W)
Screen Resolution	640 (H) x 480 (W) pixels	640 (H) x 480 (W) pixels	640 (H) x 480 (W) pixels
Operating Voltage	10 to 34 volts	10 to 34 volts	10 to 34 volts
Power Consumption	Under 12 watts	Under 12 watts	Under 12 watts
Supply Current	350 mA min – no backlighting 480 mA max – full backlighting	800 mA min – no backlighting 1000 mA max – full backlighting	800 mA min – no backlighting 1000 mA max – full backlighting
Operating Temperature	-10° to 50° Celsius	-10° to 50° Celsius	-10° to 50° Celsius
Ingress Protection Rating	IPX7*	IPX7*	IPX7*
Mounting	Bracket mount and flush mount kit included	Bracket mount and flush mount kit included	Bracket mount and flush mount kit included
Internal Memory	128 MB	128 MB	128 MB
Embedded Cartography	Background world map	Background world map	NA
GPS Receiver	Internal 16 Channel, external option available	Internal 16 Channel, external option available	NA
Cartography	C-Map Max™	C-Map Max™	NA
User Card	SD Card	SD Card	SD Card
Waypoints	Up to 10,000 with default or 8 character name	Up to 10,000 with default or 8 character name	NA
Routes	100 routes with up to 100 points each	100 routes with up to 100 points each	NA
Tracks	By time or distance, 10 tracks of 15,000 points	By time or distance, 10 tracks of 15,000 points	NA
Chart Scale	0.2 to 500 nm for chart, down to 0.005 nm in plotter mode	0.2 to 500 nm for chart, down to 0.005 nm in plotter mode	NA
Chart Display	North / Track / Course	North / Track / Course	NA
Brightness level	10 levels	10 levels	10 levels
Screen Dump Function	Yes	Yes	Yes
AIS Compatible	Yes	Yes	Yes
DSC Compatible	Yes	Yes	Yes
NMEA 0183 Input/Output	Yes (2 ports)	Yes (2 ports)	Yes (2 ports)
NMEA 2000 Compatible	Yes (1 port)	Yes (1 port)	Yes (1 port)
Fishfinder Depth Range	NA	0 m to 600 m	0 m to 600 m
Sonar Power Output	NA	Variable up to 600 watts RMS	Variable up to 600 watts RMS
Sonar Frequency	NA	Dual Frequency 50 kHz and 200 kHz	Dual Frequency 50 kHz and 200 kHz
Digital Fishfinder Technology	NA	Yes	Yes
Temperature	NA	Range 0° to 37.7° Celsius	Range 0° to 37.7° Celsius
Speed (from paddle wheel on transducer)	NA	Range 1 to 50 knots	Range 1 to 50 knots
Transducer	NA	Transom mount Speed/Depth/Temp (included) Airmar P58	Transom mount Speed/Depth/Temp (included) Airmar P58
Cabin Cover	Included	Included	Included
Simulation Mode	Yes	Yes	Yes
Alarms	User Set	User Set	User Set

*Refer to: www2.gme.net.au/IPRatings.
Specifications are subject to change without notice or obligation.

retailer:



A division of **Standard Communications Pty Ltd.**
www.gme.net.au

HEAD OFFICE: Locked Bag 2086 North Ryde, NSW 1670, Australia.

PHONE: +61 (0)2 9844 6666 **FAX:** +61 (0)2 9844 6600

BRISBANE: (07) 3278 6444 **MELBOURNE:** (03) 9798 098 **PERTH:** (08) 9455 5744

ADELAIDE: (08) 8234 2633 **AUCKLAND:** (09) 274 0955 **SYDNEY:** (02) 9879 8888