



Gate Valve

for JRC echo sounder transducers

We would like to introduce our new gate valves for the JRC echo sounder transducers UT-50MD and UT-200MD. These gate valves will be installed on the bottom of the hull of a vessel for easy maintenance and for long-term cost saving as dry docking is not necessary. These gate valves can also be installed on tanks. Our new gate valves are LR approved (other classifications pending) and have a 3.2 material certificate which are required by our customers. Due to our new design we need less space (< 1 mtr.) above the gate valve to change transducers if needed and the total weight is even less.

Gate Valve

- LR approved valve
- 3.2 material certificate for the hull flange.
- Less weight
- Complete package

Mechanical Specifications:

Color	Blue and blank (SS and brass)	Diameter	Ø 285 mm (sea chest)
Height	345 mm 445 mm (including sea chest)	Weight	105 Kg (including sea chest)

Packaging information:

Type	Individually packing in carton boxes	Includes	- Cable Gland
Weight	Approx. 105 Kg (including sea chest)		- Locking Device
			- Pull/Lock Flange
			- Cover Flange
			- Transponder/ Cable Tube
			- Gate Valve
			- Sensor Holder (only 3817.0016)
			- Hull Flange - Uncoated

Ordering information

3817.0016	Gatevalve for JRC Echosounder transducer type UT-50MD
3817.0018	Gatevalve for JRC Echosounder transducer type UT-200MD

Gate Valve

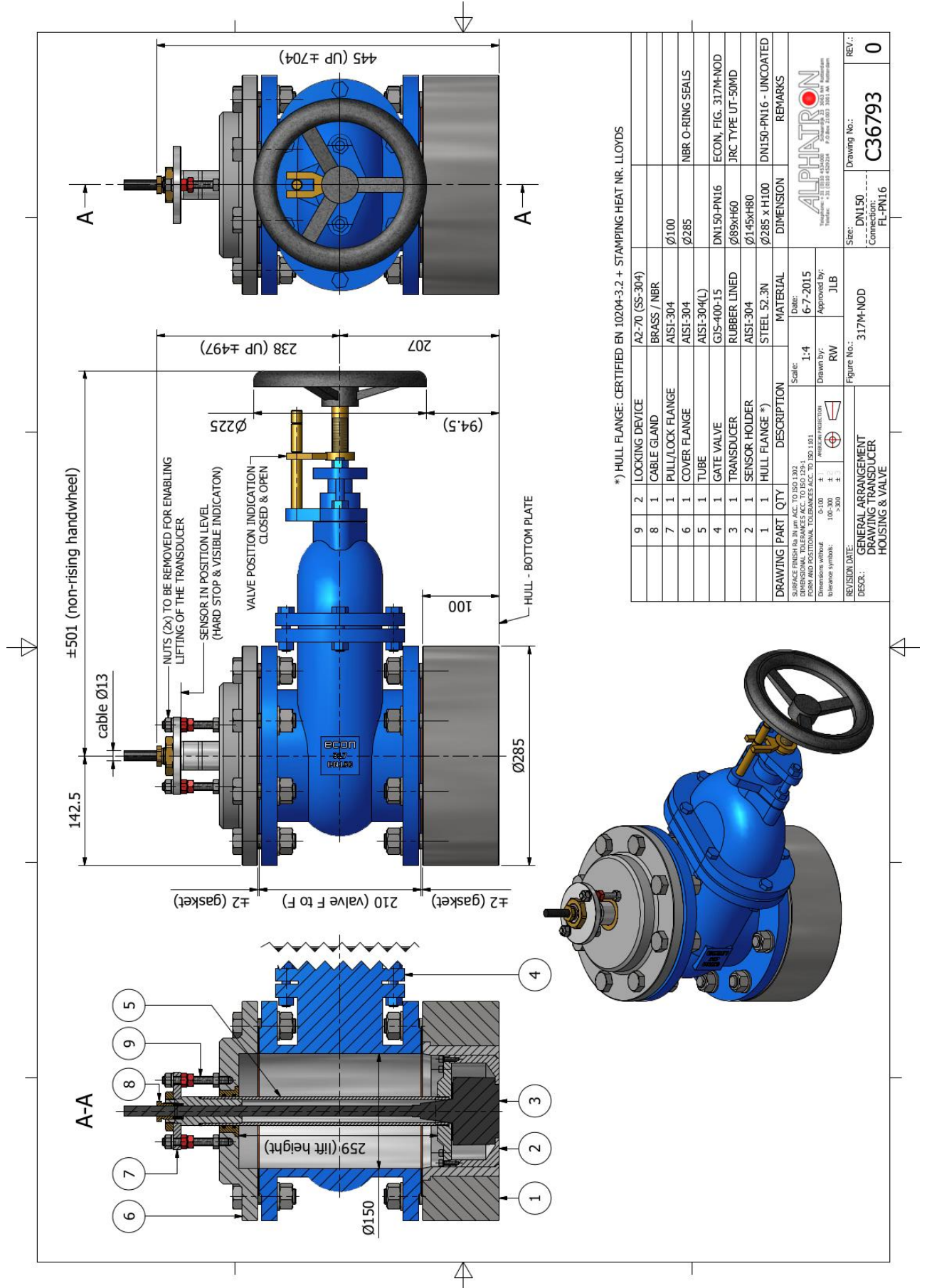
for JRC echo sounder transducers

Package overview



- Hull flange Steel
- Gate valve
- Cover flange
- Transducer Rubber lined
- Sensor holder (only 3817.0016)
- Cover sensor holder
- Tube
- Pull/lock flange
- Lock nut
- Gland
- Gland rings
- Gland seal
- O-ring
- Stud
- Washer
- Hex nut
- Hex head bolt
- Socket head screw
- Spring washer
- Stud
- Hex nut
- Spring washer
- Spacer ring Neoprene
- Gasket ring Fibre plate
- Liquid gasket Loctite 574 (tube 25ml)
- O-ring grease
- Installation Manual

3817.0016 - Gatevalve for JRC Echosounder transducer type UT-50MD



3817.0018 - Gatevalve for JRC Echounder transducer type UT-200MD

